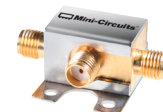


Up Converter Frequency Mixer

ZX05-U63+

Level 7 (LO Power +7 dBm) 1600 to 6000 MHz



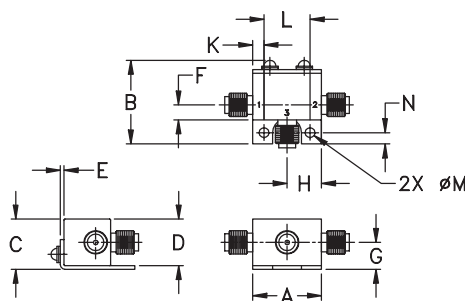
Maximum Ratings

Operating Temperature	-40°C to 85°C
Storage Temperature	-55°C to 100°C
IF Power	50mW
Permanent damage may occur if any of these limits are exceeded.	

Coaxial Connections

LO	3
IF (IN)	1
RF (OUT)	2

Outline Drawing



Outline Dimensions (inch / mm)

A	B	C	D	E	F	G
.74	.90	.54	.50	.04	.16	.29
18.80	22.86	13.72	12.70	1.02	4.06	7.37
H	J	K	L	M	N	wt
.37	--	.122	.496	.106	.122	grams
9.40	--	3.10	12.60	2.69	3.10	20.0

Features

- up converter mixer
- low conversion loss, 7.0 dB typ.
- high L-R isolation, 40 dB typ.
- rugged construction
- small size
- protected by US patents, 7,027,795 and 6,790,049

Applications

- ISM
- wide band receivers
- blue tooth
- VSAT
- WIFI

CASE STYLE: FL905

Connectors Model
SMA ZX05-U63-S+

+RoHS Compliant

The +Suffix identifies RoHS Compliance. See our web site for RoHS Compliance methodologies and qualifications

Electrical Specifications

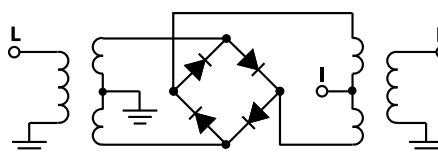
FREQUENCY (MHz)			CONVERSION LOSS* (dB)			LO-IF (IN) ISOLATION (dB)		LO-RF (OUT) ISOLATION (dB)		IP3 at center band (dBm)
IF (IN)	LO	RF (OUT)	Typ.	σ^{**}	Max.	Typ.	Min.	Typ.	Min.	Typ.
1600-2500	3100-5700	3800-6000	7.0	0.3	8.6	17	13	40	28	10

1 dB COMPR. +1.0 dBm typ.
* Conversion Loss at 2400 MHz IF
** σ is a standard deviation

Typical Performance Data

Frequency (MHz)	Conversion Loss (dB)		Isolation L-I (dB)		Isolation L-R (dB)		VSWR RF (OUT) Port (:1)		VSWR LO Port (:1)	
	LO	RF (OUT)	LO	RF (OUT)	LO	RF (OUT)	LO	RF (OUT)	LO	RF (OUT)
	+7dBm	+7dBm	+7dBm	+7dBm	+7dBm	+7dBm	+7dBm	+7dBm	+7dBm	+7dBm
2400.00	3100.10	5500.10	6.17	16.49	43.23	1.28	2.63			
2400.00	3125.10	5525.10	6.03	16.60	41.99	1.31	2.57			
2400.00	3150.10	5550.10	6.19	16.53	42.24	1.34	2.54			
2400.00	3175.10	5575.10	6.30	16.46	43.35	1.37	2.57			
2400.00	3200.10	5600.10	6.30	16.71	42.95	1.43	2.60			
2400.00	3225.10	5625.10	6.38	16.80	42.05	1.45	2.55			
2400.00	3250.10	5650.10	6.37	16.71	41.76	1.50	2.52			
2400.00	3275.10	5675.10	6.61	16.51	42.22	1.52	2.54			
2400.00	3300.10	5700.10	6.59	16.57	42.29	1.62	2.58			
2400.00	3325.10	5725.10	6.66	16.94	40.24	1.65	2.56			
2400.00	3350.10	5750.10	6.89	16.75	40.18	1.70	2.53			
2400.00	3375.10	5775.10	6.84	16.30	41.20	1.70	2.53			
2400.00	3400.10	5800.10	7.06	16.52	40.60	1.81	2.58			
2400.00	3450.10	5850.10	7.15	16.33	39.88	1.86	2.51			
2400.00	3475.10	5875.10	7.21	16.25	40.24	1.88	2.51			
2400.00	3500.10	5900.10	7.43	16.51	39.03	1.92	2.53			
2400.00	3525.10	5925.10	7.41	16.57	39.03	1.98	2.52			
2400.00	3550.10	5950.10	7.56	16.26	39.25	1.90	2.52			
2400.00	3575.10	5975.10	7.58	16.39	39.63	1.97	2.53			
2400.00	3600.10	6000.10	7.53	16.24	39.48	1.89	2.53			

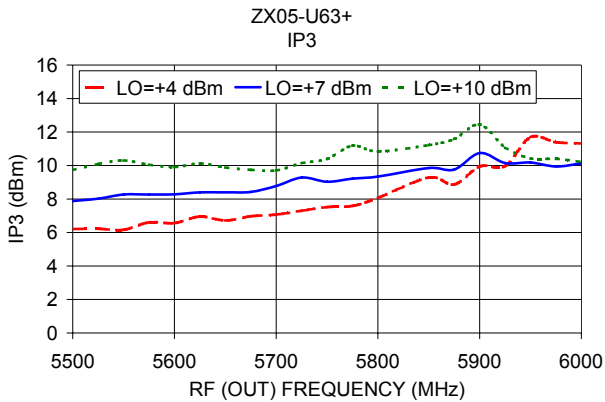
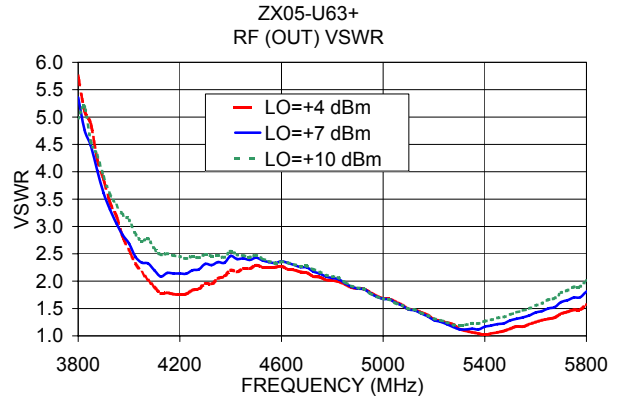
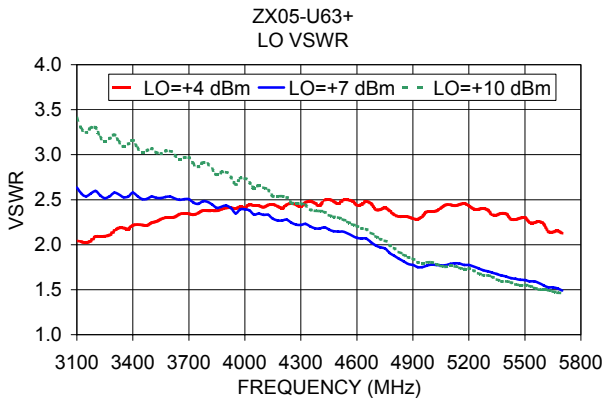
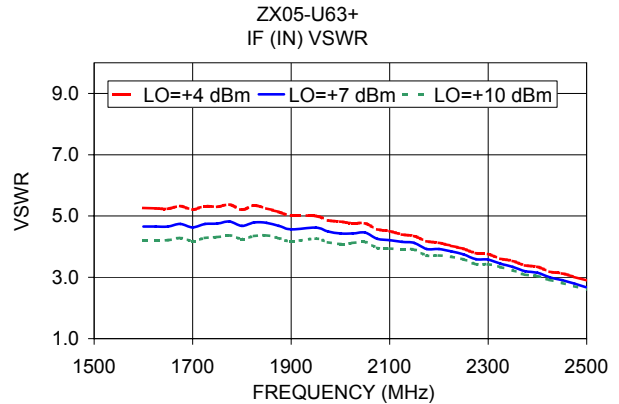
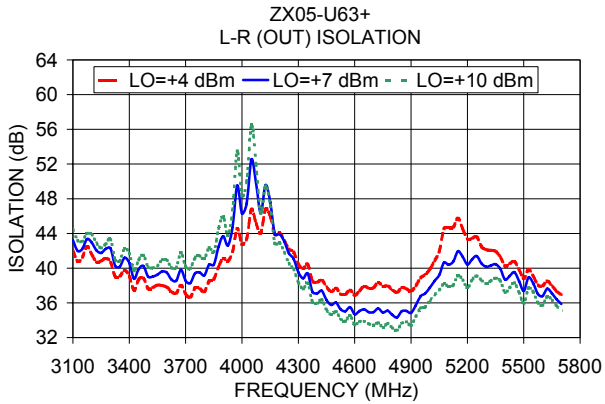
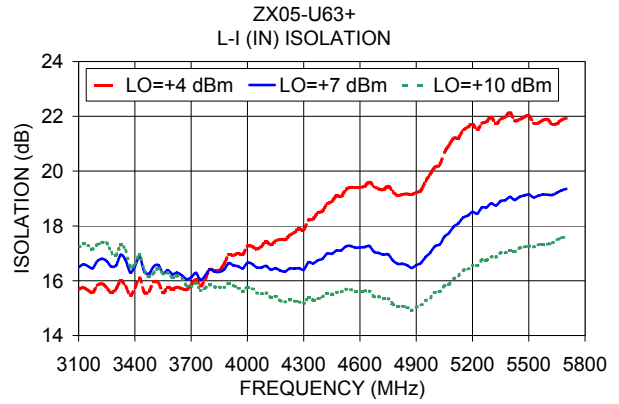
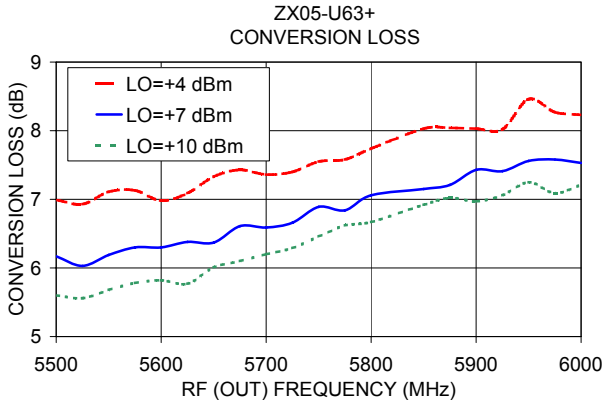
Electrical Schematic



Notes

- Performance and quality attributes and conditions not expressly stated in this specification document are intended to be excluded and do not form a part of this specification document.
- Electrical specifications and performance data contained in this specification document are based on Mini-Circuit's applicable established test performance criteria and measurement instructions.
- The parts covered by this specification document are subject to Mini-Circuits standard limited warranty and terms and conditions (collectively, "Standard Terms"); Purchasers of this part are entitled to the rights and benefits contained therein. For a full statement of the Standard Terms and the exclusive rights and remedies thereunder, please visit Mini-Circuits' website at www.minicircuits.com/MCLStore/terms.jsp





Notes

- A. Performance and quality attributes and conditions not expressly stated in this specification document are intended to be excluded and do not form a part of this specification document.
- B. Electrical specifications and performance data contained in this specification document are based on Mini-Circuit's applicable established test performance criteria and measurement instructions.
- C. The parts covered by this specification document are subject to Mini-Circuits standard limited warranty and terms and conditions (collectively, "Standard Terms"); Purchasers of this part are entitled to the rights and benefits contained therein. For a full statement of the Standard Terms and the exclusive rights and remedies thereunder, please visit Mini-Circuits' website at www.minicircuits.com/MCLStore/terms.jsp

